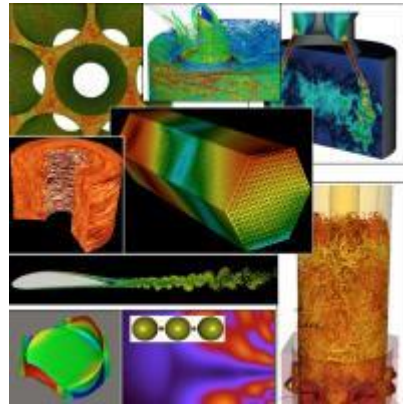


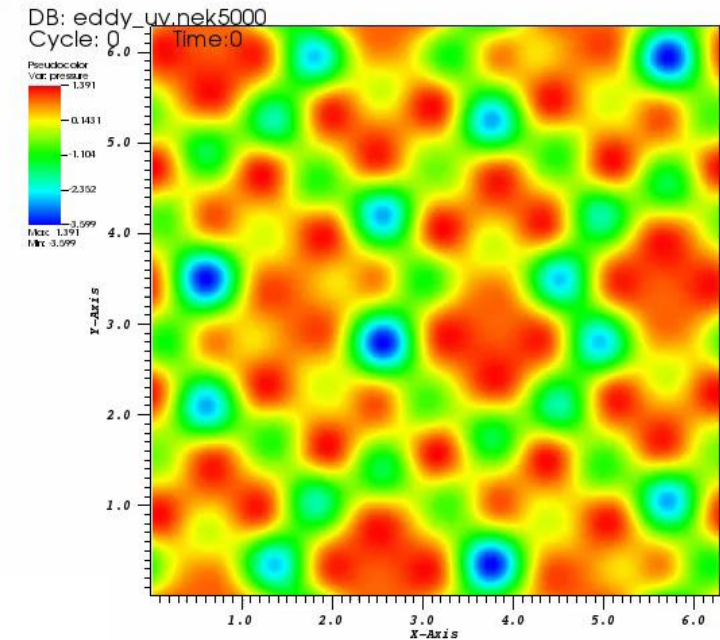
# Instrumenting Nek5000 for SENSEI

Bennett Bernardoni

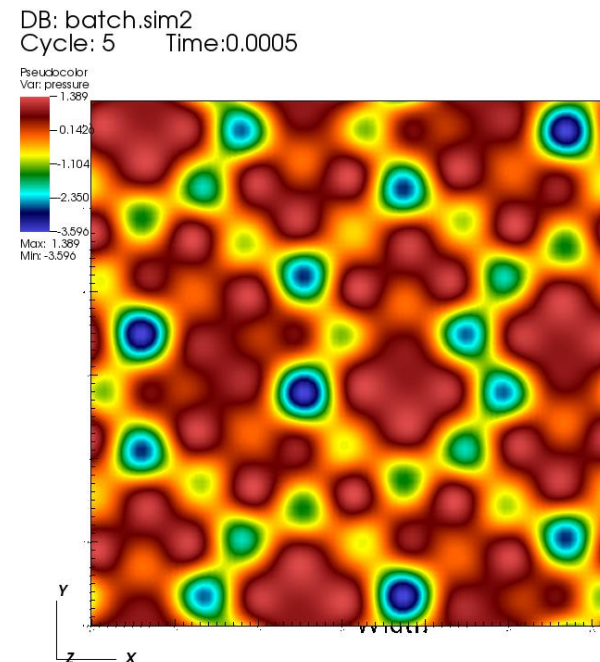


# Project Progress

- Finished implementing SENSEI Data Adaptor
- Debugged numerous compile and run-time errors
  - Found a few SENSEI bugs
- My Nek example case now runs in situ using `sensei::ConfigurableAnalysis`



Original Nek Visualization



In Situ Visualization Using Libsim

# Future Goals

- Get working on Cooley and Theta
- Extend Data Adaptor to support 3D Nek cases
- Test more complex cases
- Clean and abstract the build and install process